

Phospholipase C beta 2 Polyclonal Antibody

Purified Rabbit Polyclonal Antibody (Pab)

Catalog # AP58450

Specification

Phospholipase C beta 2 Polyclonal Antibody - Product Information

Application	WB, IHC-P, IHC-F, IF, E
Primary Accession	Q00722
Reactivity	Rat, Pig, Dog, Bovine
Host	Rabbit
Clonality	Polyclonal
Calculated MW	130 KDa
Physical State	Liquid
Immunogen	KLH conjugated synthetic peptide derived from human Phospholipase C beta 2
Epitope Specificity	401-500/1185
Isotype	IgG
Purity	
affinity purified by Protein A	
Buffer	0.01M TBS (pH7.4) with 1% BSA, 0.02% Proclin300 and 50% Glycerol.
SIMILARITY	Contains 1 C2 domain.Contains 1 PI-PLC X-box domain.Contains 1 PI-PLC Y-box domain.
SUBUNIT	Interacts with RAC1.
Important Note	This product as supplied is intended for research use only, not for use in human, therapeutic or diagnostic applications.

Background Descriptions

The production of the second messenger molecules diacylglycerol (DAG) and inositol 1,4,5-trisphosphate (IP3) is mediated by activated phosphatidylinositol-specific phospholipase C enzymes.

Phospholipase C beta 2 Polyclonal Antibody - Additional Information

Gene ID 5330

Other Names

1-phosphatidylinositol 4, 5-bisphosphate phosphodiesterase beta-2, 3.1.4.11, Phosphoinositide phospholipase C-beta-2, Phospholipase C-beta-2, PLC-beta-2, PLCB2 (http://www.genenames.org/cgi-bin/gene_symbol_report?hgnc_id=9055)
HGNC:9055

Dilution

WB~~1:1000
IHC-P~~N/A
IHC-F~~N/A
IF~~1:50~200
E~~N/A

Format

0.01M TBS(pH7.4), 0.09% (W/V) sodium azide and 50% Glyce

Storage

Store at -20 °C for one year. Avoid repeated freeze/thaw cycles. When reconstituted in sterile pH 7.4 0.01M PBS or diluent of antibody the antibody is stable for at least two weeks at 2-4 °C.

Phospholipase C beta 2 Polyclonal Antibody - Protein Information

Name PLCB2 ([HGNC:9055](#))

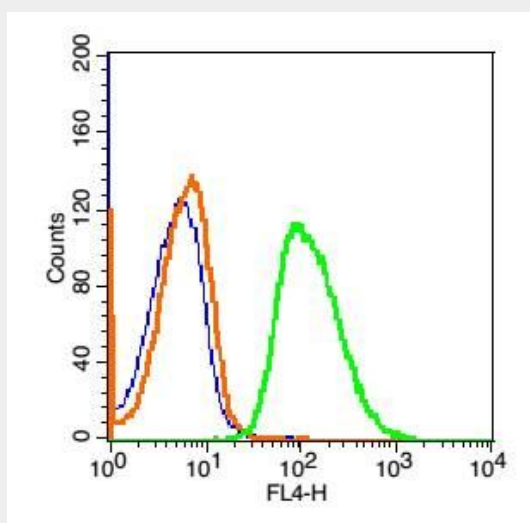
Function

The production of the second messenger molecules diacylglycerol (DAG) and inositol 1,4,5-trisphosphate (IP3) is mediated by activated phosphatidylinositol-specific phospholipase C enzymes (PubMed:1644792, PubMed:9188725). In neutrophils, participates in a phospholipase C-activating N-formyl peptide-activated GPCR (G protein- coupled receptor) signaling pathway by promoting RASGRP4 activation by DAG, to promote neutrophil functional responses (By similarity).

Phospholipase C beta 2 Polyclonal Antibody - Protocols

Provided below are standard protocols that you may find useful for product applications.

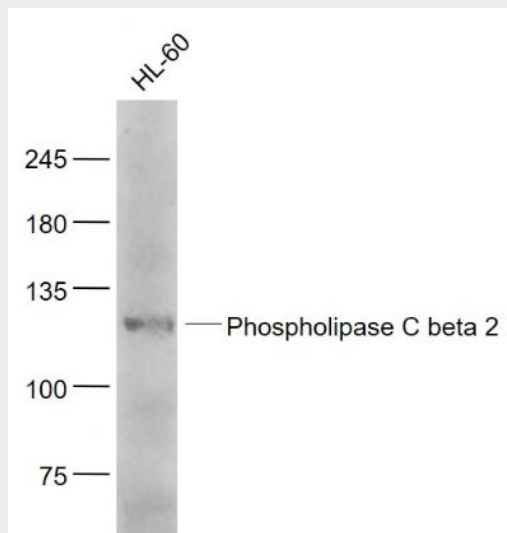
- [Western Blot](#)
- [Blocking Peptides](#)
- [Dot Blot](#)
- [Immunohistochemistry](#)
- [Immunofluorescence](#)
- [Immunoprecipitation](#)
- [Flow Cytometry](#)
- [Cell Culture](#)

Phospholipase C beta 2 Polyclonal Antibody - Images

Blank control: Hela Cells(fixed with 2% paraformaldehyde (10 min) and then permeabilized with ice-cold 90% methanol for 30 min on ice).

Primary Antibody: Rabbit Anti-Phospholipase C beta 2/AF647 Conjugated antibody (bs-6472R-AF647), Dilution: 1 μ g in 100 μ L 1X PBS containing 0.5% BSA;

Isotype Control Antibody: Rabbit IgG/AF647(orange) ,used under the same conditions.



Sample:

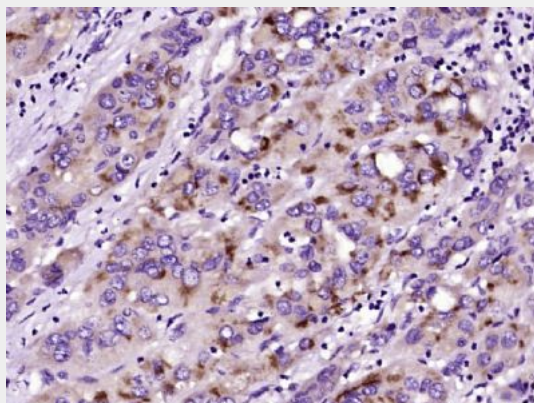
HL-60(Human) Cell Lysate at 30 μ g

Primary: Anti- Phospholipase C beta 2 (bs-6472R) at 1/1000 dilution

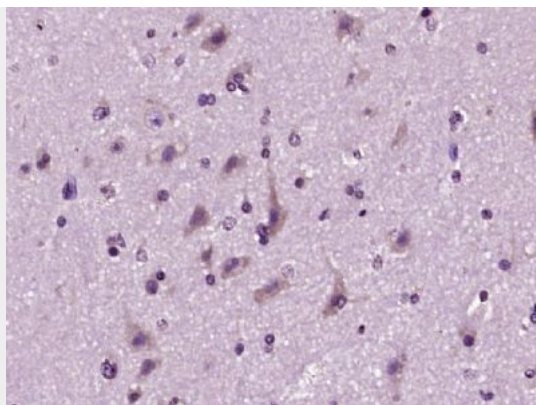
Secondary: IRDye800CW Goat Anti-Rabbit IgG at 1/20000 dilution

Predicted band size: 130 kD

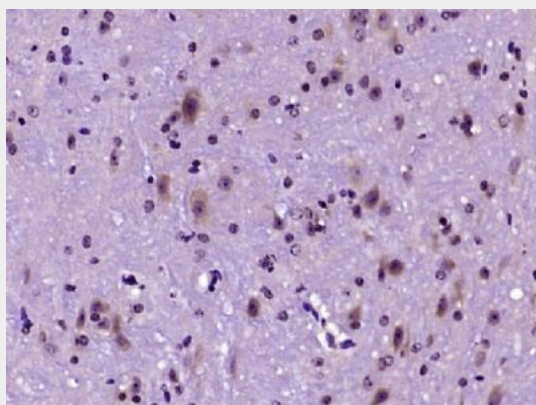
Observed band size: 130 kD



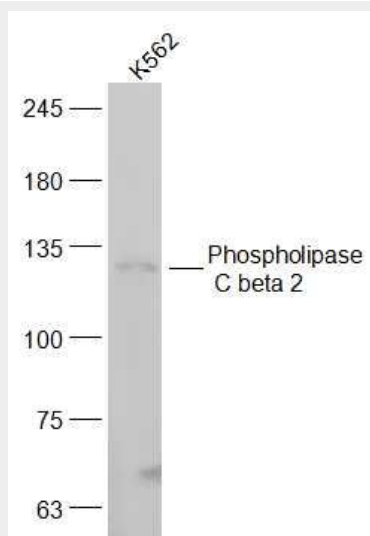
Paraformaldehyde-fixed, paraffin embedded (human liver carcinoma); Antigen retrieval by boiling in sodium citrate buffer (pH6.0) for 15min; Block endogenous peroxidase by 3% hydrogen peroxide for 20 minutes; Blocking buffer (normal goat serum) at 37°C for 30min; Antibody incubation with (PLCB2) Polyclonal Antibody, Unconjugated (bs-6472R) at 1:400 overnight at 4°C, followed by operating according to SP Kit(Rabbit) (sp-0023) instructions and DAB staining.



Paraformaldehyde-fixed, paraffin embedded (human brain glioma); Antigen retrieval by boiling in sodium citrate buffer (pH6.0) for 15min; Block endogenous peroxidase by 3% hydrogen peroxide for 20 minutes; Blocking buffer (normal goat serum) at 37°C for 30min; Antibody incubation with (PLCB2) Polyclonal Antibody, Unconjugated (bs-6472R) at 1:400 overnight at 4°C, followed by operating according to SP Kit(Rabbit) (sp-0023) instructions and DAB staining.

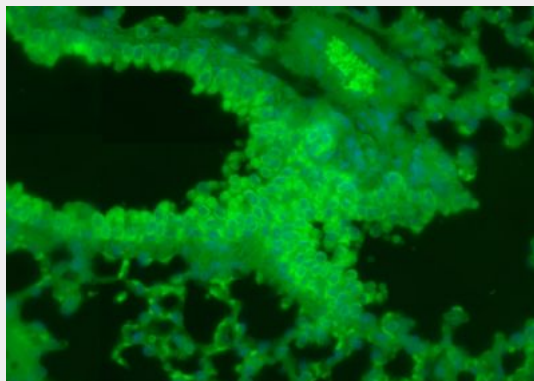


Paraformaldehyde-fixed, paraffin embedded (mouse brain tissue); Antigen retrieval by boiling in sodium citrate buffer (pH6.0) for 15min; Block endogenous peroxidase by 3% hydrogen peroxide for 20 minutes; Blocking buffer (normal goat serum) at 37°C for 30min; Antibody incubation with (PLCB2) Polyclonal Antibody, Unconjugated (bs-6472R) at 1:400 overnight at 4°C, followed by operating according to SP Kit(Rabbit) (sp-0023) instructions and DAB staining.



Sample:

K562(Human) Cell Lysate at 30 ug
Primary: Anti-Phospholipase C beta 2 (bs-6472R) at 1/300 dilution
Secondary: IRDye800CW Goat Anti-Rabbit IgG at 1/20000 dilution
Predicted band size: 130 kD
Observed band size: 130 kD



Paraformaldehyde-fixed, paraffin embedded (Mouse lung); Antigen retrieval by boiling in sodium citrate buffer (pH6.0) for 15min; Block endogenous peroxidase by 3% hydrogen peroxide for 20 minutes; Blocking buffer (normal goat serum) at 37°C for 30min; Antibody incubation with (Phospholipase C beta 2) Polyclonal Antibody, Unconjugated (bs-6472R) at 1:400 overnight at 4°C, followed by a conjugated Goat Anti-Rabbit IgG antibody (bs-0295G-FITC) for 90 minutes, and DAPI for nuclei staining.